

The Whitman™



Design | Technology | Innovation

 **BRIGGS®**



FEATURES

- Anti-splash rim
- Stain-resistant vitreous china
- 2 convenient soap depressions
- Concealed front overflow
- 5-year warranty

AVAILABLE COLOR



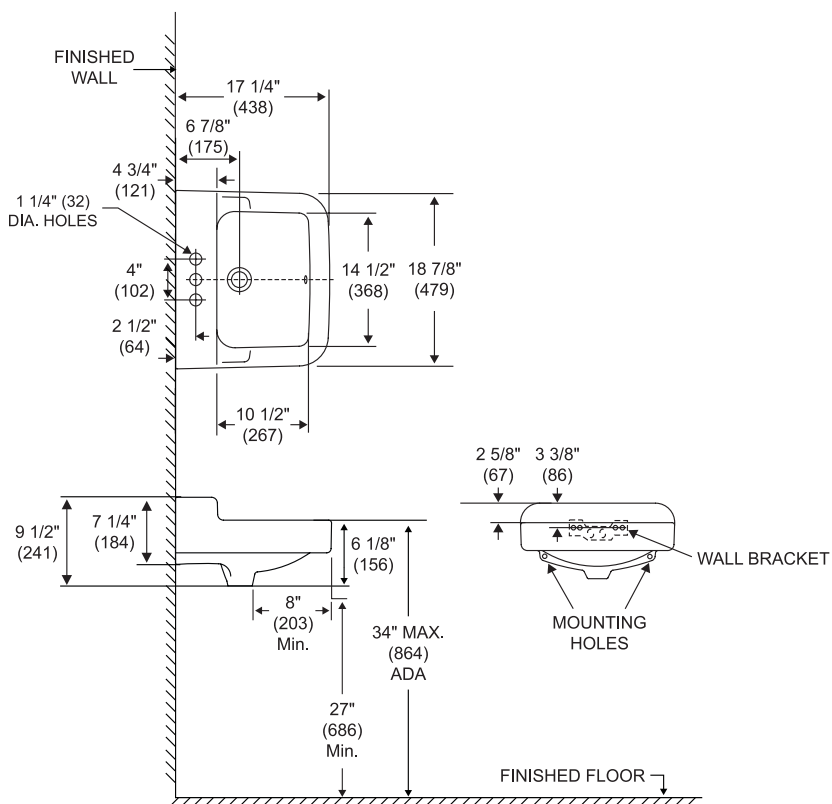
WHITE (130)

SPECIFICATIONS

- Model 6619: 4" centers; consists of wall-mounted lavatory basin, 31 lb

INSTALLATION

- Installation instructions supplied
- Wall hanger included for easy installation
- Installable under ADA standards



Dimensions may vary (+) or (-) 1/4". Dimensions shown in parentheses are in millimeters: 25.4 mm = 1 inch. Note: Fixture dimensions are nominal and conform with dimension and performance requirements of ASME/ANSI Standards A112.19.2M. Dimensions subject to change or cancellation without notice. Briggs is not responsible for the use of superseded or voided specification information.