





FEATURES

- Wash-out flushing action
- Stain-resistant vitreous china
- Wall-hung design
- Integral flushing rim
- 3/4" top inlet spud
- 1 1/2" outlet spud for exposed trap connection
- Flush valve not included
- Limited Lifetime warranty

AVAILABLE COLORS



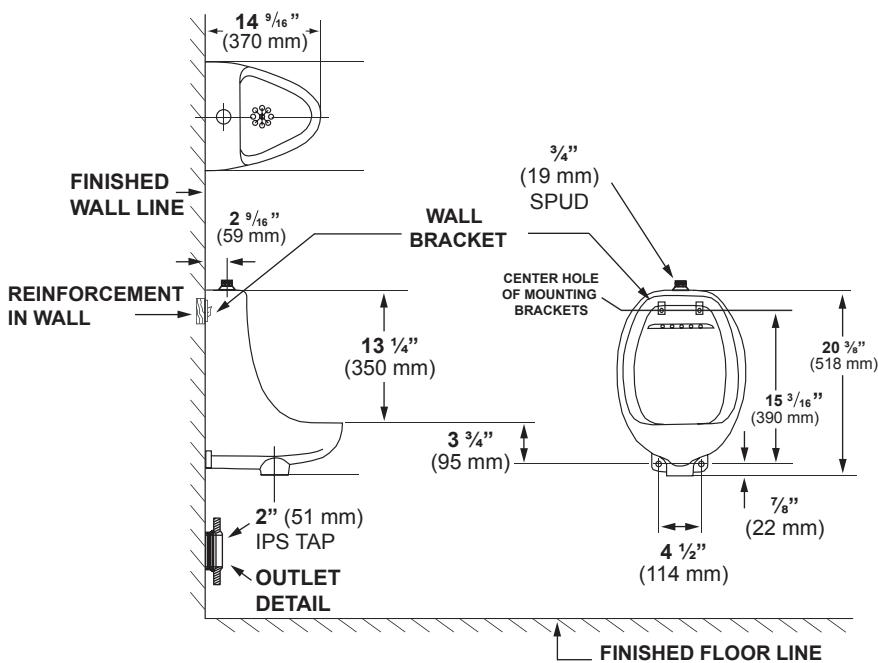
WHITE (130)

SPECIFICATIONS

- Model 7505: Wash-out ADA urinal, 23 lb (10 kg)

INSTALLATION

- Urinal installation instructions supplied
- Hanging bracket included
- Installable under ADA standards



Dimensions may vary (+) or (-) 1/4". Dimensions shown in parentheses are in millimeters: 25.4 mm = 1 inch. Note: Fixture dimensions are nominal and conform with dimension and performance requirements of ASME A112.19.2-2008/CSA B45.1-08. PSI rating: 20 minimum to 80 maximum per ASME A112.19.2-2008/CSA B45.1-08. Dimensions subject to change or cancellation without notice. Briggs is not responsible for the use of superseded or voided specification information.