

The Aegis™ Vacuity®



Design | Technology | Innovation

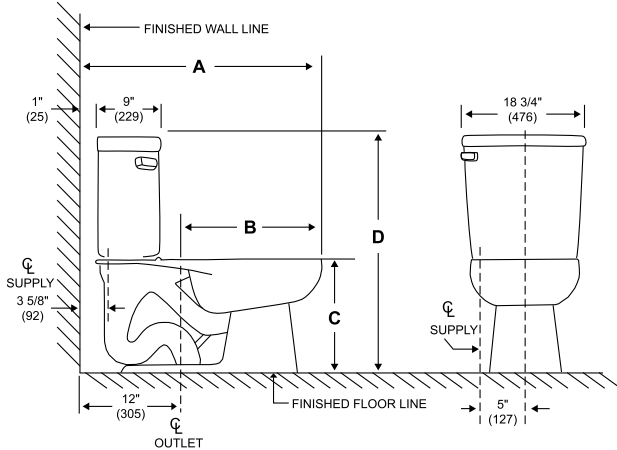
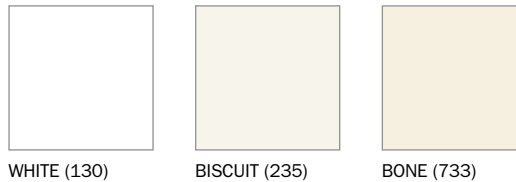
 BRIGGS®




## FEATURES

- Fresh, minimalistic design
- Stain-resistant vitreous china
- Powerful one-flush performance of PowerVAC™ flushing system
- 10" x 12" water surface
- High quality Fluidmaster® tank fittings
- Fully glazed 2" trapway
- Operates in a wide range of pressure (5 PSI to 100 PSI)
- Sanitary bar on bowl for ease of cleaning
- Tank within a tank eliminates condensation
- Chrome trip lever
- 21-1/4" x 9-3/4" footprint, Model 4310
- 23" x 10" footprint, Models 4300 and 4340
- 10-year PowerVAC Advantage™ warranty

## AVAILABLE COLORS



## SPECIFICATIONS

- Model 4204: 12" rough-in round toilet, 86 lb, consists of bowl (Model 4310) and tank (Model 4404)
- Model 4205: 12" rough-in elongated toilet, 91 lb, consists of bowl (Model 4300) and tank (Model 4404)
- Model 4206: 12" rough-in elongated ComfortFit ADA toilet, 96 lb, consists of bowl (Model 4340) and tank (Model 4404) 
- Model 7461: Tank lid for Model 4404

	4204	4205	4206
<b>A</b>	28-1/2" (724)	30-1/2" (775)	30-1/2" (775)
<b>B</b>	16-1/2" (419)	18-1/2" (470)	18-1/2" (470)
<b>C</b>	14-1/2" (368)	14-1/2" (368)	17" (432)
<b>D</b>	30-1/2" (775)	30-1/2" (775)	32-1/8" (816)

Dimensions may vary (+) or (-) 1/4". Dimensions shown in parentheses are in millimeters: 25.4 mm = 1 inch. Note: Fixture dimensions are nominal and conform with dimension and performance requirements of ASME/ANSI Standards A112.19.2M. Dimensions subject to change or cancellation without notice. Briggs is not responsible for the use of superseded or voided specification information.

## INSTALLATION

- Installation instructions supplied
- Quick-connect system for easy tank-to-bowl installation